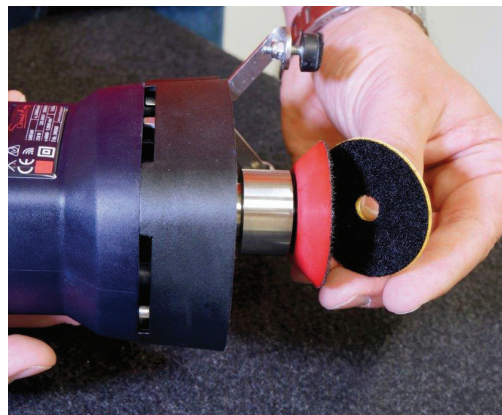


# Scratch-A-Way

## Scratch Removal System



# 1 Product Information

More than 90% of all scratches are surface scratches. They can be effortlessly removed step by step with our Scratch-A-Way scratch removal system. Among the well-known glass repair systems on the market, the internationally patented Scratch-A-Way system excels due to its quick, reliable and „invisible“ results.

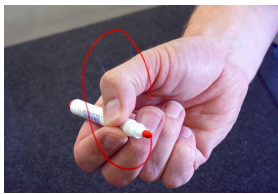
It is suitable for removing small scratches, stains and acid damages on flat glass, insulating glass, car glass, etc. The flexible rubber collar protects the working environment and the user from contamination. When removing scratches in the marginal areas of already installed glass, the rubber collar can simply be removed and edges become freely accessible.

Scratch-A-Way is suitable for use both in the workshop and on site.

# 2 Application

- Thoroughly clean the glass surface with clean water, do not use glass cleaner.
- Position the machine on the glass surface in a 90° angle, with the disc flush on the glass surface; have the position corrected by a second person, if necessary.
- Place your hand in the centre of the machine above the grinding wheel.
- Remove the red rubber cap when working horizontally in order to have a free view of the processed spot.
- The required surface temperature lies between approx. 60 – 65°C (this temperature is automatically reached when using the minimum amount of water).
- The optimum rotation speed on glass amounts to 60/75 rpm.
- Optimum results can be achieved if you make sure to only work on scratch removal surfaces which are not bigger than 1.5 times the diameter of the polishing disc. Please mark the corresponding spots before hand.
- As far as handling is concerned, it cannot be compared to a Delta sander for colour removal, but our system works at a very slow pace within the marked area.
- In case of slight fogging, first clean the machine on an old glass pane. Afterwards work with the pane to be polished.

## Mark

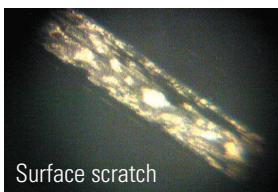


Thoroughly clean the glass with clean water and the supplied red leather cloth. Mark the scratch on the bottom side of the glass with a red marking pen.

## Analyse



Inspect the surface with the magnifier. The scratch is now displayed in 30-fold magnification. The magnifier moreover also illuminates the scratch. The exact focus of the magnifier allows for a detailed evaluation of the scratch.



Surface scratch



Deep scratch

Only surface scratches can be completely removed with Scratch-A-Way.

## Polish



Place the polishing disc with its Velcro fastening facing downwards onto the disc support. Moisten the scratch with water. Slowly move the machine in uniform spiral movements back and forth over the scratch. Stop after 30 seconds.

Remove the abrasion with the protective rubber collar and inspect the polished area. Repeat the procedure until the scratch has been completely removed.

## Clean



Finally thoroughly clean the glass with Bohle glass cleaner BO 5107805 - done.

Art. no.	Description
BO 53 009 14	Scratch-A-Way SAW360 230 V
BO 53 009 02	Scratch-A-Way pneumatic drive
BO 53 009 11	Polishing Disc